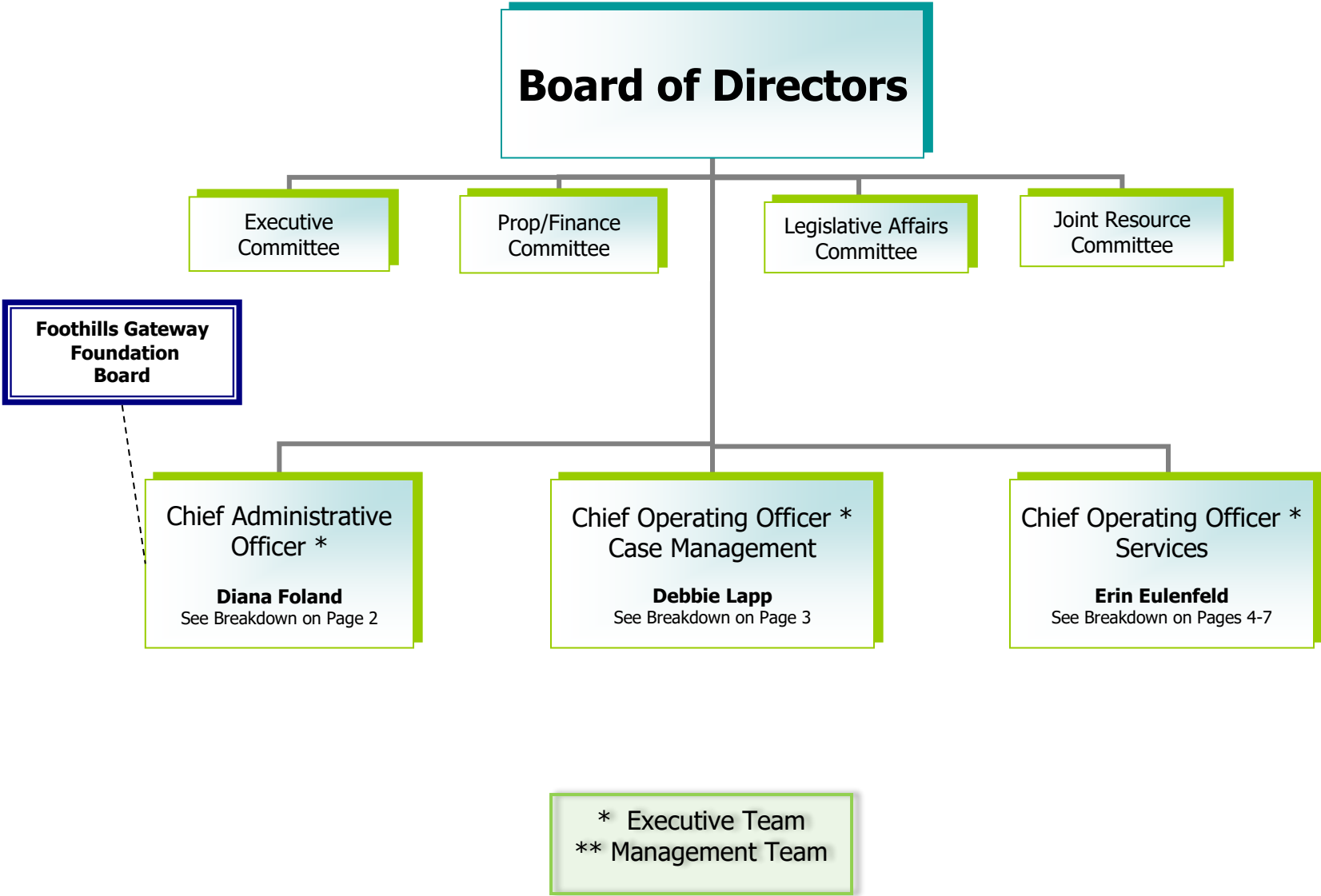
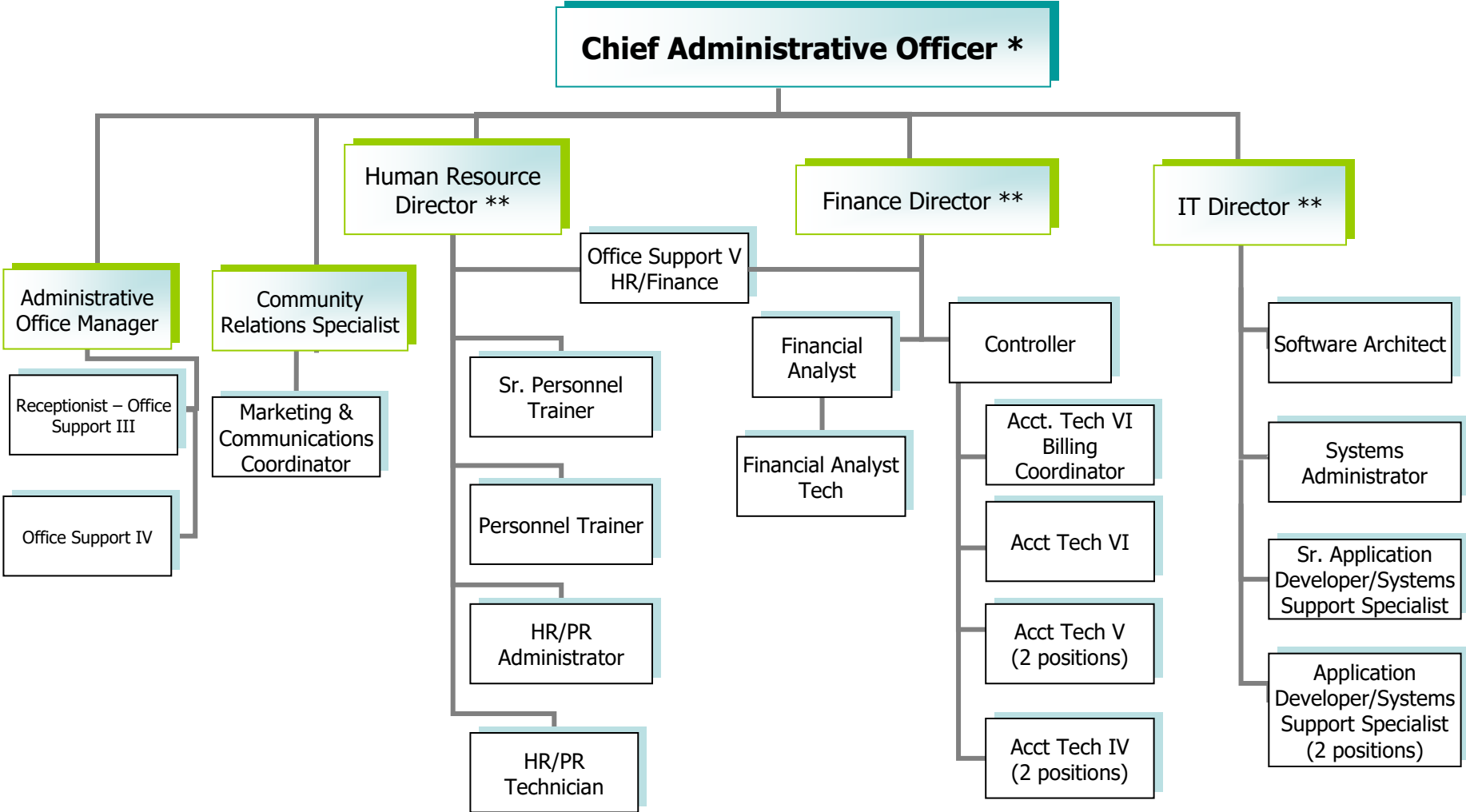


FOOTHILLS GATEWAY ORGANIZATIONAL CHART



FOOTHILLS GATEWAY ORGANIZATIONAL CHART



FOOTHILLS GATEWAY ORGANIZATIONAL CHART

**Chief Operating Officer
Case Management ***

Office Support
V

**Comprehensive
Case Mgmt. Director ****

**HUD Housing
Coordinator**

**Part C/EI
Coordinator**

**Placement
Coordinator**

**Support Services
Case Mgmt. Director ****

Adult Case Managers
(3 positions)

Ass't. HUD
Housing
Coordinator

Lead Service
Coordinator

Intake & Eligibility
Manager

Lead SLS/CES
Case Manager

Lead
Case Manager

Service
Coordinators
(6 positions)

Intake
Case Managers
(5 positions)

SLS/CES
Case Manager
(4 positions)

Adult Case Managers
(3 positions)

Part C/EI Service
Coordinators
(11 positions)

Office Support V
(Resource Coord. Tech)

Lead SLS/CES
Case Manager

Lead
Case Manager

Office Support IV
Part C/EI
Admin. Ass't.

Office Support IV
(File Clerk)

SLS/CES
Case Manager
(4 positions)

Adult Case Managers
(3 positions)

Office Support III
Part C/EI
File Clerk

Office Support IV
(Resource Coord. Ass't)

Lead SLS/CES
Case Manager

Office Support V

2 Language
Interpreters

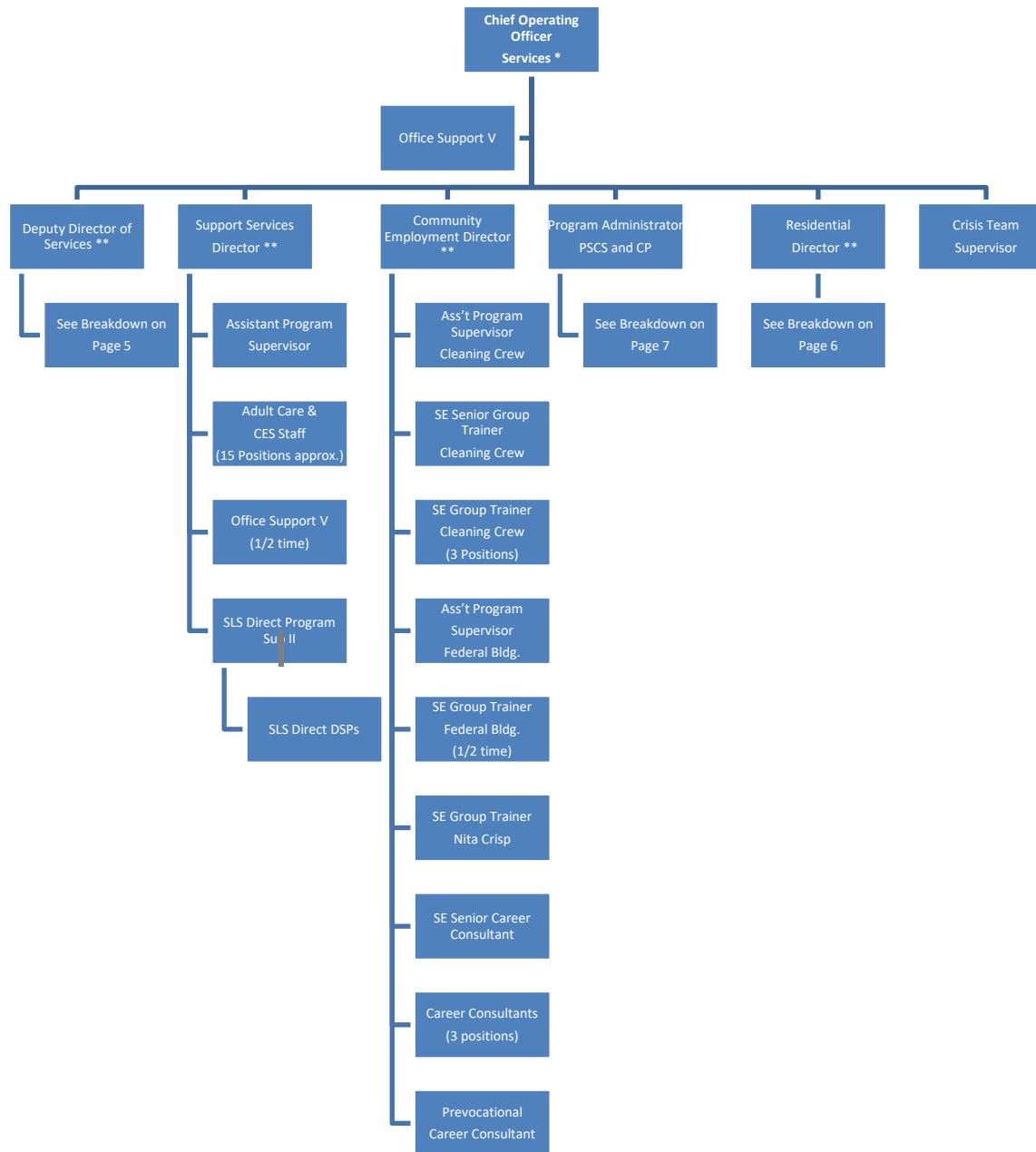
Office Support IV
(File Scanner)

SLS/CES
Case Manager
(3 positions)

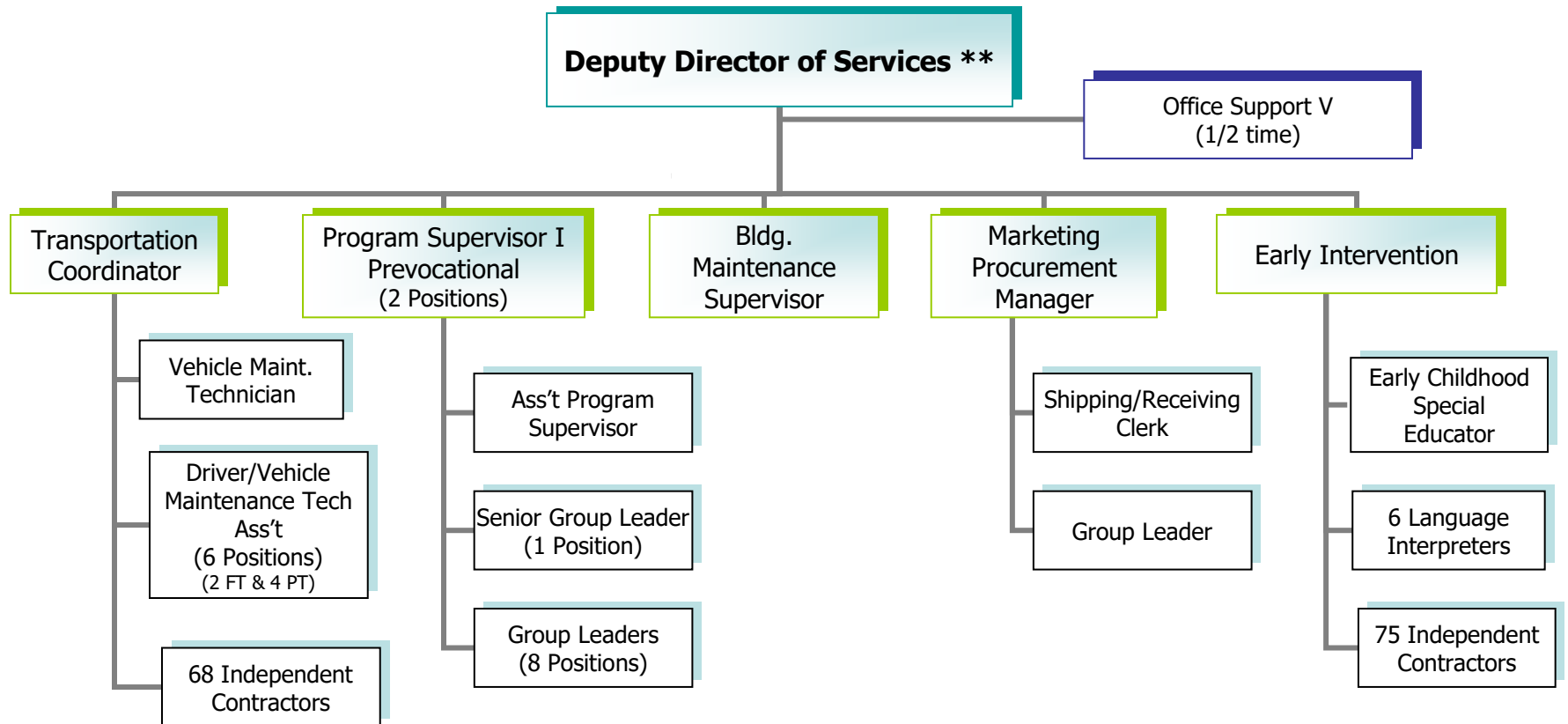
Children's
Case Managers
(4 positions)

Office Support V
Data Tech
(SLS/CES/FSSP
& Children's Waivers)

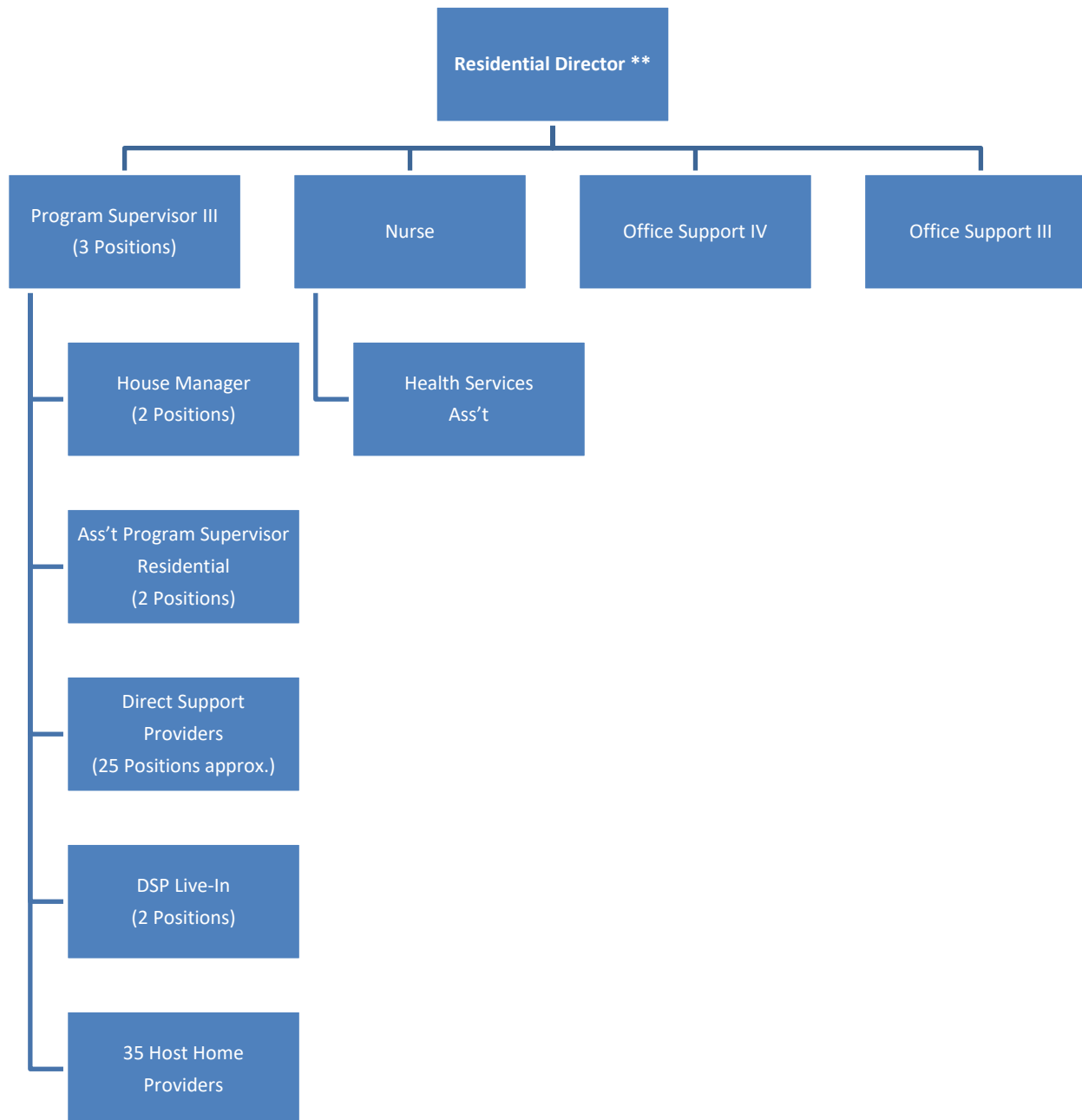
FOOTHILLS GATEWAY ORGANIZATIONAL CHART



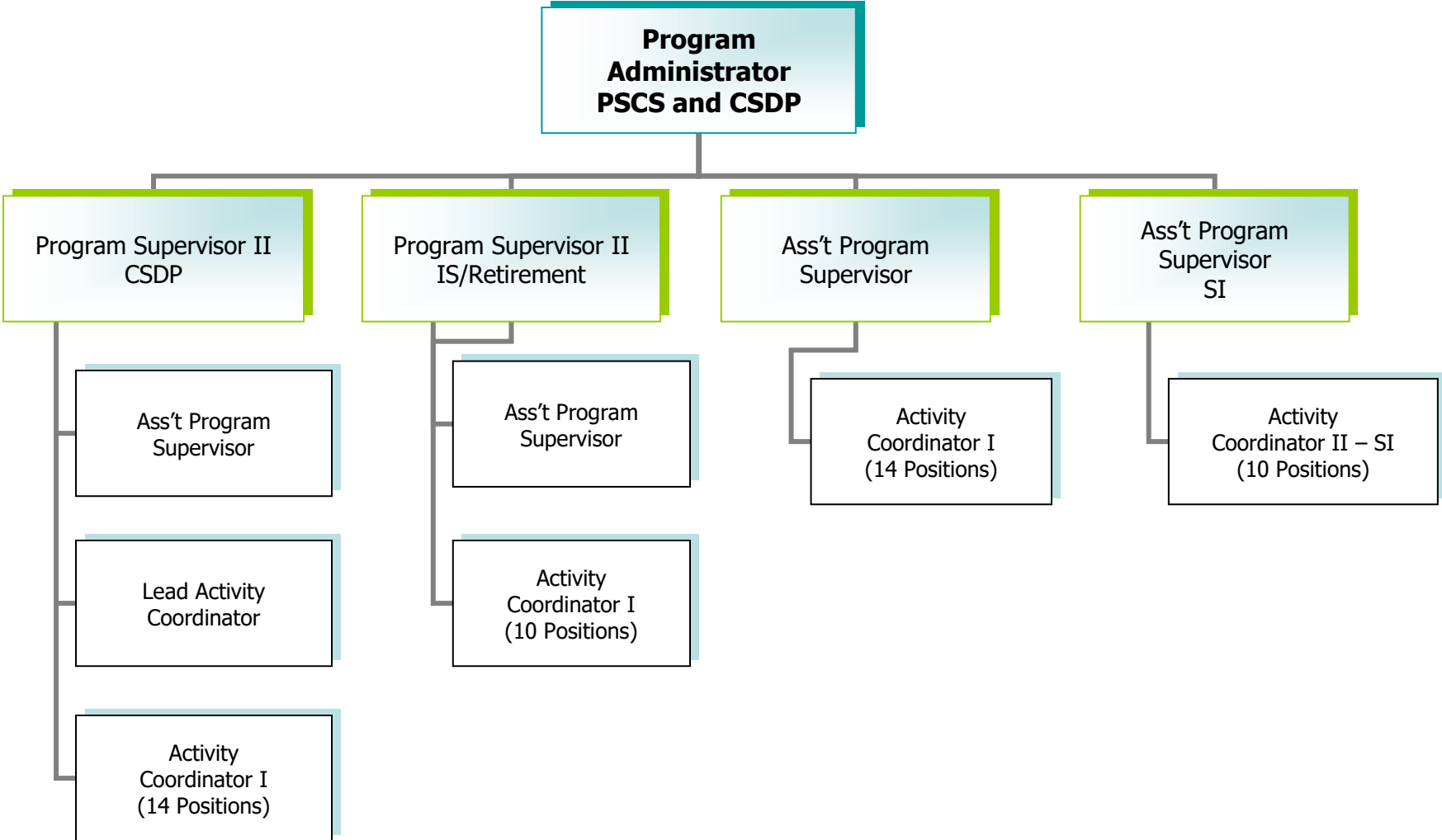
FOOTHILLS GATEWAY ORGANIZATIONAL CHART



FOOTHILLS GATEWAY ORGANIZATIONAL CHART



FOOTHILLS GATEWAY ORGANIZATIONAL CHART



04/09, ... 7/12, 4/14, 2/15, 7/15, 4/16, 7/16; 5/17